



SMART  
SOFTWARE  
SOLUTIONS

1000+  
SUCCESSFULL  
PROJECTS



## THE LONGEST-RUNNING PROJECT

- **12** years
- **100+** employees
- more than **one million** man-hours

Founded in **1991**

**300+** technical experts

Several production offices

Development partner in major international projects

Cooperates with universities and research institutes, labs for students

Certified ISO 90001:2015, 21001:2006,  
**Microsoft Gold Partner**, Apple  
Development Program

# INDUSTRIES



**MEDICINE AND  
HEALTH CARE**



**EDUCATION**



**AUTOMOTIVE  
INDUSTRY**



**SMART  
DEVICES**



**SMART  
CITY**



**LOGISTICS**



**ADAPTIVE LEARNING,  
E-LEARNING**



**OIL & GAS**



**EQUIPMENT &  
MANUFACTURING**

**... AND OTHERS**

# CUSTOMERS

NOKIA

SIEMENS

Disney



kaspersky



FOSS



CEVA

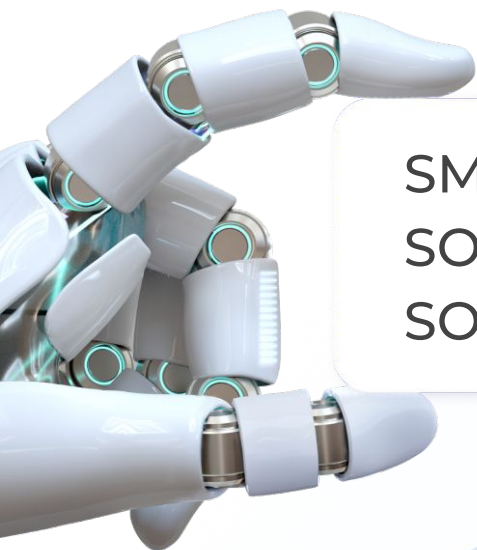


SIXT



DELL EMC

# DEVELOPMENT OF INTEGRATED SOLUTIONS



SMART  
SOFTWARE  
SOLUTIONS

Digital transformation  
& Information systems

Computer vision

Artificial intelligence

Highly loaded databases

E-learning platforms

AR, XR



# INFORMATION SYSTEMS, DIGITAL SYSTEMS & PLATFORMS

## Services

- Development of information systems for any customer's tasks
- Audit of existing information systems, related business processes and business artifacts
- Integration with all necessary systems involved in production using their APIs
- Digital twins of production and business processes
- Further support of developed products, their development and improvement
- Development of analytical tools and systems for data processing and analysis
- Integrated digital platforms
- IT landscape consulting
- (AI, LLM, BigData)

# GLOBAL INFORMATION SYSTEM PROJECT:

## DIGITAL TWIN OF SEISMIC AND GEOLOGICAL EXPLORATION



### MAJOR OIL & GAS COMPANY (NDA)

#### Specificity

- Digitalization of key industry upstream processes
- Operational access to statistics and analytics on all field and desk work parameters, entering daily summaries, remotely or from the office
- Consolidated 800+ historical projects
- Reduced project cycle time by 20%
- Several times shorter time to analyze information and improved the quality of geologists' decisions
- Digital twin covers 100% of onshore exploration field projects

#### Our expertise

Custom software development

Independent IT solutions

IT landscape consulting

Expert systems





# COMPUTER VISION, ARTIFICIAL INTELLIGENCE

## Services

- Development computer vision systems — AI, neural networks
- 3D reconstruction
- Stitching panoramas
- Security sensors for uavs, motor vehicles, robots
- Gesture recognition
- Analyzing warehouse supplies
- Smart video surveillance
- Smart safety systems (control of wearing PPE, hazardous areas, loading and unloading operations, control of special equipment movement)
- Product quality control systems
- AI for document processing (LLM/GPT)



# GLOBAL COMPUTER VISION PROJECT:

## DIGITAL PRODUCTION TWIN WITH DETECTION SYSTEMS — NO ANALOGUES IN THE WORLD

### MAJOR METALLURGICAL PLANT (NDA)

#### Specificity

- Real-time access to objective defect and up-to-date status information
- Automatic data transfer to the company's digital twin via REST API
- Tracking of tooling, semi-finished product, finished product, and unit statuses
- Sub-millimeter accuracy of defect size determination
- Hot process operation in aggressive environments, temperatures up to 2370°F/1300°C
- Operation of systems without stopping production

#### Our expertise

Object identification

System of defect detection  
and classification

System of defects localization  
and geometric dimensions  
determination

System of AR-support in production



# HIGHLY LOADED DATABASES / BIGDATA

## Services

- Optimizing production capacity and increasing the efficiency of the available hardware resource
- Database migration to new versions or architecture change or vendor of solutions change
- Information systems maintenance and support/optimization of database and OS settings
- Development of high-loaded databases
- Transferring logic into stored procedures
- Configuring security policies and backups

# GLOBAL HIGHLY LOADED DATABASES PROJECT:

## UNIFIED MEDICAL INFORMATION AND ANALYTICAL SYSTEM

### Specificity

- Automation of over 700 medical institutions of outpatient and polyclinic type
- Automation of examinations and receipt of results of centralized laboratory service
- Development of new protocols for examinations, research and administrative protocols
- Technical support and maintenance of solutions - medical event management service and resource utilization recording service
- Expansion of functional capabilities in terms of microbiological, cytological and histological examinations

### Our expertise

Medical automated  
information systems

Biometric sensor controllers

Clinical Decision Support Systems

Medical visualization

Learning systems for work  
with medical simulators



# EDUCATIONAL PLATFORMS

## Services

- Primary analytics and audit (technical and process)
- Roadmapping business processes
- Drawing up and formalizing standards
- Describing user roles and scenarios
- Supporting and analyzing systems currently in use
- Implementing and polishing open solutions for electronic and distance learning
- Integrating with third-party resources and systems
- Migrating to other platforms
- Working with cloud services

# GLOBAL EDUCATIONAL PROJECT: ELECTRONIC EDUCATION SYSTEM



**INTERNATIONAL MARKET LEADER E-LEARNING MCGRAW-HILL EDUCATION**



## Specificity

- A family of applications for the international market
- Cross-platform for iPad, iPhone, Android, Windows, Mac, Linux + own functional language
- System stability with 10+ million users per month
- Development and realization of a new DSL for non-programmers to create products

## Our expertise

Complex of software products in the e-learning

Training management system

Medical staff knowledge testing system

Development of digital certificate

Development and implementation of adaptive learning technologies

Creation/rebuild of adaptive courses for corporate universities

Integration and migration of learning systems





## AR, XR

### Services

- **AR-assistants for various application areas**
- **AR support** (ERP integration, AR outdoor/indoor navigation, real-time service status for continuous industrial processes; diagnostics)
- **Smart City**
- **Training**
- **Tourism/Art**

# GLOBAL AR/XR PROJECT

## ART SPACE — APPLICATION AND WEB3-MARKETPLACE OF DIGITAL ART

### Specificity

- Development of a mobile application and marketplace for working with digital art objects — paintings, videos, 3D models.
- Organization of AR-places for expositions, exhibitions, etc.
- Detailed viewing and purchasing of art objects in augmented reality mode on the platform Augmented.City.
- Presentation of digital works in the form of NFT-tokens with confirmation of uniqueness of art objects on the basis of blockchain technology.
- FT-tokens for buying/selling limited edition artworks.
- Extended information about each object (original title, author's and owner's names)

### Our expertise

Transfer of author's works into digital formats in the FT or NFT token.

Organization of AR-exhibitions.

Viewing/buying/selling art objects using a common mobile device in AR mode.

Management of a large number of art objects based on Web3-technologies.



# BENEFITS OF OUTSOURCING IT SOLUTIONS WITH US

## **TURN AN IDEA INTO A PRODUCT**

- Development of desktop, mobile and web applications
- Deep expertise in various subject areas
- Cooperation with leading universities and research institutes
- Specialization on science-intensive projects
- In the portfolio: R&D, prototyping, MVP, replication and support

## **OVER THE YEARS, WE'VE BEEN PERFECTING THE "IT" TEAM**

- The average length of time an employee has been with the company is 5+ years
- 25% of employees have been working together for 10+ years
- Flexible work and education processes

## **PROVIDE TRANSPARENT CONTROL**

- Dedicated development and support teams
- Communication with each specialist

## **OPTIMIZE THE CODE AND GO TO NEW TECHNOLOGIES**

- Open-source
- Proprietary algorithms
- AI, AR/XR, computer vision
- Advanced development methodologies, databases and programming languages
- Re-engineering and migration of existing solutions to the new stack
- Experience in the full technology development cycle

# SCALABILITY AND FLEXIBILITY TEAM BUILDING

From the provision of specialists for a specific task to the formation of long-term development centers

From Time&Material and Fixed Price to Retainer and Outstaff

## WE USE DIFFERENT METHODOLOGIES TO MEET THE NEEDS OF A PARTICULAR PROJECT:

We are based on Agile approach, including different modifications of SCRUM.

We work according to the client's methodology, using it without changes or offering edits to work according to the outsourcing model.

Priority of automation - regression testing, smoke testing, nightly builds.



# THANK YOU

[contact@lanit-tercom.com](mailto:contact@lanit-tercom.com)  
<https://lanit-tercom.com>